



Department of
Education

Shaping the future

Albany Residential College

Parent and Student 2026 Handbook



**Albany Residential College and its staff respectfully
acknowledge the Menang people who are the traditional
custodians of the Wagyl Kaip and Southern Noongar land on
which our students live and are educated.**

**We pay respect to Elders past, present and those who are
emerging.**



Contents

Contact details	4
Welcome to Albany Residential College	5
About us.....	5
Our staff	6
College governance	6
Our code of conduct.....	7
Costs and Charges.....	8
Learning Support.....	9
Homework and study.....	9
What your child needs to bring	12
What not to bring.....	14
Leave arrangements	15
Student Transport	17
College Life	18
Recreation and Social	22
Health and safety	25
Parent concerns and complaints	28
Safety and welfare – for students	29
Appendix: Residential college code of conduct.....	32

Contact details

ALBANY RESIDENTIAL COLLEGE

8 Thomas Street

(PO Box 1402)

ALBANY WA 6330

Supervisors

Telephone: 08 9844 2500

Mobile: 0447 248 547 (Male) / 0447 234 722 (Female)

E-mail: albanyres.col.supervisors@education.wa.edu.au

Administration and finance

Telephone: 08 9844 2501

E-mail: albany.rescol@education.wa.edu.au

Website: education.wa.edu.au/web/albanyresidentialcollege

Facebook: facebook.com/AlbanyResidentialCollege

Instagram: instagram.com/albanyresidentialcollege

Mail: *Albany Residential College*

PO Box 1402

ALBANY WA 6330

Business hours:

Mon-Fri

8:30am – 4:30pm

Department of Education

151 Royal Street

East Perth WA 6004

T: 9264 4111

W: www.education.wa.edu.au

Inward telephone

If your child does not have a mobile phone, you can contact them at the college on the following number:

08 9844 2500

Students are asked to remind family and friends that they are unavailable to receive incoming calls during mealtimes, study time or after lights out.

Inward mail

You can send mail to your child at the College's postal address above.

Emergency contact

Students are discouraged from using their mobile phones after lights out. In case of emergency, please call the college supervisors on 0447 248 547 or 0447 234 722. A supervisor will then contact your child with minimum disruption to other students.

Welcome to Albany Residential College

Thank you for choosing Albany Residential College for your child.

We look forward to working with you to support our students and watch them grow over the years to come. All college staff are committed to providing a safe and caring environment to support your child in their education and personal development.

We aim to provide a high-quality boarding service which is valued by you and your children. Your suggestions on how we can improve our service are always welcome.

About us

Albany Residential College is located high on Mount Clarence, situated directly behind Albany Senior High School. The college offers 106 single rooms in a safe and secure setting, with separate living spaces for girls and boys. The location of the college allows views across to Centennial Stadium, while being a short 14-minute walk into town. The college has several common spaces to encourage student socialisation, including a recreation room inside the college, and a recreation shed outside. Students also have access to the Albany Senior High School oval and gymnasium.

Many of our students come from surrounding country towns in the Great Southern region, as well as several students travelling from communities within other areas of the State. Our students are enrolled at one of the local high schools, including Albany Senior High School (ASHS), North Albany Senior High School (NASHS), St Joseph's College, Australian Christian College, Bethel Christian School and Western Australian College of Agriculture Denmark (WACOAD).

The college was originally opened as Amity House in 1974 under Country High School Hostels Authority with extensions completed in 1993. The Priory Hostel (located around the corner on Burt Street) amalgamated with Amity House in 1989, and this heritage listed building still stands today as a private residence. More recently, in 2010, substantial renovations saw the college reopened as Albany Residential College. In 2017 the Department of Education assumed control of one city-based residential college and eight country residential colleges, including Albany.

Students who reside at Albany Residential College benefit from a quality secondary education, while staying connected to regional Western Australia. Students may choose to return home at the weekends, as well as taking part in a variety of sporting, recreational and educational extra-curricular activities.



Our staff

Residential college staff comprise of a supervisory team and a support team, both of which report to the College Manager. The College Manager reports to the Manager Residential Colleges in the Department of Education in Perth.

Supervisory staff hold various qualifications including:

- Certificate IV in Community Services – Student Residential Care
- First Aid Certificate (including CPR)
- Surf Rescue Certificate
- Aquatic Rescue for Group 3 Pool Award
- LR Class Driver's Licence with passenger transport driver (PTD) authorisation.



College governance

Albany Residential College is governed by the *School Education Act 1999* and is administered by the Western Australian Department of Education. The College Manager works with staff to develop local processes in line with Department of Education policies and procedures.

All Department of Education policies can be viewed at www.det.wa.edu.au/policies.

Local Input Networking and Communications (LINC) Committee

Supporting Albany Residential College is our Local Input Networking and Communications (LINC) committee. Membership is comprised of parent, community member and staff representatives.

The functions of the LINC committee are set through legislation and include the provision of advice to the college manager regarding the operation and management of the college. Please speak with us if you would like to join this important advisory group.

Student Council

The Student Council are selected late in the year to take up the role for the following year. Students are selected by their peers and endorsed by our supervisors and College Manager. They are students that demonstrate positive behaviour as role models for their peers and accept the responsibility of presenting and advocating ideas on their behalf.

The role of the Student Council is to help maintain a positive college atmosphere of mutual respect, promote boarder participation in college life, seek guidance from college staff and discuss boarder concerns, as well as establish links within the community via volunteer work.

Our code of conduct

The Residential College Code of Conduct (the Code), reproduced in the Appendix, sets out some simple expectations for students:

- In respect to self
- In respect to other students
- In respect to staff
- In respect to property.

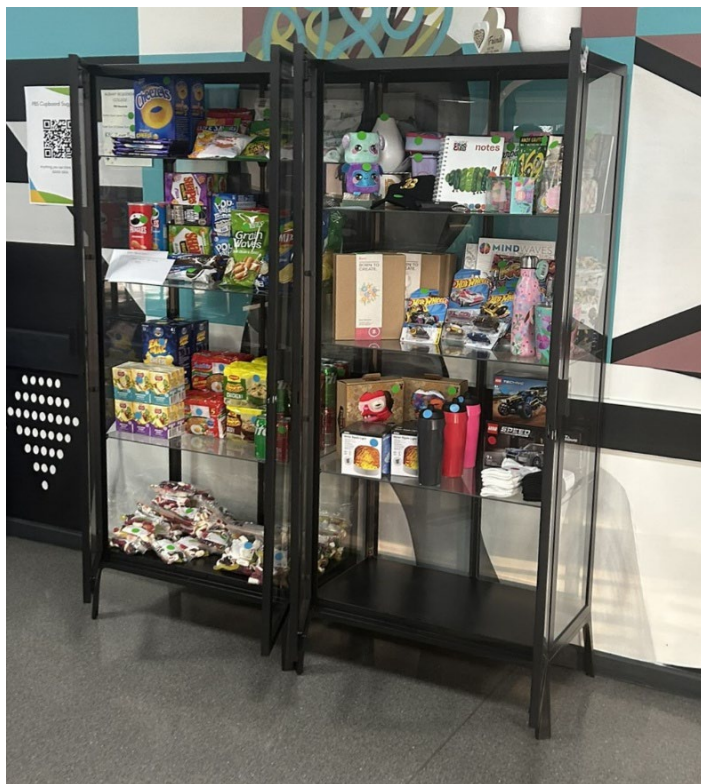
When signing the Boarding Agreement for your child, you are undertaking that your child will comply with the Code.

When your child signs the Boarding Agreement, they agree they have read, understood, and will follow the Code; and understand that there may be consequences for breaches.

Positive Behaviour Support (PBS)

We are committed to the PBS program which supports the implementation of the Department of Education's *Student Behaviour in Public Schools Policy and Procedures*. Our goal is to create a safe, positive environment where students are engaged and successful.

RESPECT | BELONGING | INDEPENDENCE



The Positive Behaviour Support (PBS) Program rewards positive behaviour at the College. The objective is to reward often and advise the student of the behaviour being recognised. The philosophy behind the PBS Program is that when students are rewarded for positive behaviour, negative behaviours will be reduced.

At Albany Residential College Staff award students with PBS tokens (coins). This can be given any time a student shows positive behaviours through respect to self, respect to other students, respect to staff, respect to property.

Students can then choose to spend their coins from the PBS cupboard. The cupboard contains various items chosen by staff and the student council.

Costs and Charges

Annual boarding fee

The boarding fee covers a student's bed, meals, facilities, and pastoral care. It applies to all Department of Education Residential Colleges and is the same for all year levels.

Refer to our website www.education.wa.edu.au/web/albanyresidentialcollege for the latest information on costs and charges.

Bond

A \$300 bond is required as part of the boarding agreement. The bond is security for the performance of your obligations under the agreement. It may be used to compensate the residential college for any outstanding costs or for repairing damage a student may cause to college property. At the completion of the boarding agreement the balance of the \$300 will be returned to you.

Other costs – individual services





The residential college recovers the cost of providing individual services to students such as the purchase of required medications and participation in optional organised activities.

Payment

By accepting a place at the college and signing the Boarding Agreement you agree to:

- Pay the invoiced amount for accommodation and individual services each year.
- Complete required payments prior to the first day of term.
- Pay any outstanding amounts if the Boarding Agreement is terminated.

Payment options

 <p>in Person</p> <p><i>cash, cheque, EFTPOS</i></p> <p>Albany Residential College 8 Thomas Street ALBANY WA 6330</p>	 <p>by Phone</p> <p><i>credit card</i></p> <p>(08) 9844 2500 8:30 am - 3:30 pm Monday to Friday</p>	 <p>by Mail</p> <p><i>cheque, money order</i></p> <p>Albany Residential College PO Box 1402 ALBANY WA 6330</p>	 <p>via EFT</p> <p><i>electronic bank transfer</i></p> <p>BSB: 066-040 A/C: 19907507</p> <p>Please use student name as the reference</p>
---	---	---	--

Financial assistance and allowances

It is a condition of the Boarding Agreement that you assign to the residential college any subsidies or payments received to offset the charge for accommodation each year.

Please refer to the residential colleges website <https://www.education.wa.edu.au/residential-colleges> for the latest information on fees and allowances.

Learning Support

The main reason a student boards with us is their desire to access a quality education. At Albany Residential College we support students to achieve their academic goals.

Please note that residential college staff are not authorised to sign school documentation on parents' behalf. Should a student receive a school form or permission slip, you will need to sign and return to the school.



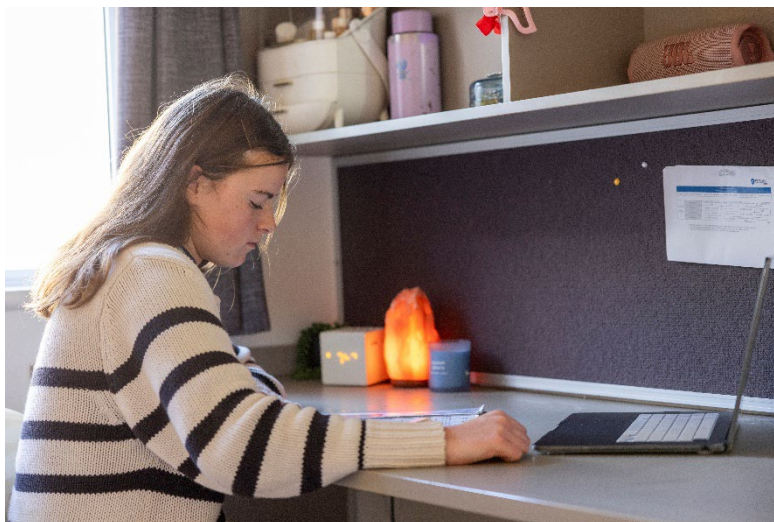
Homework and study

Students are invited to practise sound study habits and be respectful of other students' needs for a distraction free environment.

Sunday – Thursday 7.00 – 9.00pm

Students are expected to work constructively during these study times and may need to dedicate extra effort outside of these times to complete all academic requirements.

Students without set homework on any given day are required to remain quiet to respect students that have study. Students without study can do tasks such as revision, recreational reading, writing, or other supervisor approved recreational activity of their choice.



Term 3 school holidays ATAR exams

Some ATAR exams take place during the Term 3 school holiday period. With sufficient advanced notice, we may be able to arrange a modified boarding service during this time to facilitate those students requiring accommodation in order to attend exams. Please request this service by the first day of Term 3 should you require it.

Music and Art rooms

Students can take advantage of the secure, dedicated music room to store their instruments and practise without disturbing others. The music room can be booked for use during study time and can also be accessed outside of study time with staff permission. Students may also make use of the Art Room for school or personal use.



Tutoring

If students require additional help with their schooling, they should always avail themselves of the school programs on offer. If students are unable to attend these, or if what is offered by the school and college is not sufficient, you may consider engaging a private tutor. Private tutoring costs are not covered by student boarding fees, but college staff will assist in finding a suitable place for private tutoring to occur.

All students are able to access the college tutors during study. This group tutoring service is freely available for all college students. Currently the college is supported by a tutor two night per week, however, availability may vary.

Computers and internet access

College internet is set up for students to be able to study and research their required school work. This can be accessed via WIFI

Each Common room has a desk and laptops are available for student use.

There is also scope for students to use the network for reasonable personal use. Students are discouraged from using the college network for online gaming and/or streaming which may slow user speeds for others.

To access college internet, you and your child will sign an Online Services Acceptable Use Agreement setting out rules surrounding Department of Education-provided online services.

To access college internet, you and your child will sign an online services acceptable use agreement setting out rules surrounding Department of Education-provided online services.

Extended school absences

We provide a boarding service for students while they attend, and participate in an educational programme of, a school. If your child is expected to be absent from school for an extended period, they will be required to return home until they are able to resume their schooling.

Reasons that students may be absent from school and required to return home include:

- they have been suspended from school
- they have an infectious disease such as flu or COVID-19
- they have a long-term illness/injury
- a break between usual school time and exams.

If you are unable to collect your child, you may alternatively arrange for their travel home by other means or arrange for them to stay with a local contact or guardian.

Students absent from school for short periods of time due to illness will be confined to the colleges' sick bay.



What your child needs to bring

The essentials

We ask parents/carers to monitor the number of personal items brought to the college, however, it is important for students to feel their room is comfortable and homelike. Some popular options are photographs, string lights and small trinkets. Parents must ensure that all clothing is clearly labelled. The college provides a mattress protector in each room. This list is not comprehensive and should be used as a general guide.

- Clothes and shoes for all seasons
- School uniforms and shoes
- Bathers, rash shirt, hat and towel
- Study, school and sporting requirements
- Bedding (King Single sheets, pillow, doona, blankets)
- Bath towel and toiletries (roll-on deodorant only, no aerosol cans)
- Laundry basket and wash bag
- Coat hangers
- Mug or cup for personal use for hot drinks

Please be advised that the college does not allow electric blankets, personal heaters, fridges or televisions in student rooms.

Mobile phones and personal devices

Computer access has become an integral part of schooling and a personal device (including but not limited to mobile phones, laptops, headphones and other connectable technology) can be very useful when used appropriately.

Personal devices should primarily be used for study purposes or appropriate communication with others and are not to be used after lights out. Students are discouraged from using the college network for online gaming and/or streaming which may slow user speeds for others.

Personal devices are kept in a locked cupboard or room overnight. Students may be provided access to their devices after breakfast each morning.

Students are not permitted to have more than one mobile phone and must provide their mobile phone number and details of that mobile phone to staff when requested. Students are required to have the college contact numbers in their mobile phones.

Mobile phones are not to be used at mealtimes, during study or after lights out. Students in Year 7 – 10 must hand their phone in at the end of study and can collect them the following morning after breakfast and when their rooms meet expectations.



Student property

Insurance

The Department of Education does not have insurance cover for student property that is lost, stolen or damaged.

Security

Please ensure your child's personal property including clothing and bedding is clearly and permanently labelled or marked for easy identification.

The college takes precautions to care for your child's personal belongings and will assist where possible with lost, damaged or stolen items, however, we are unable to accept responsibility for these items.

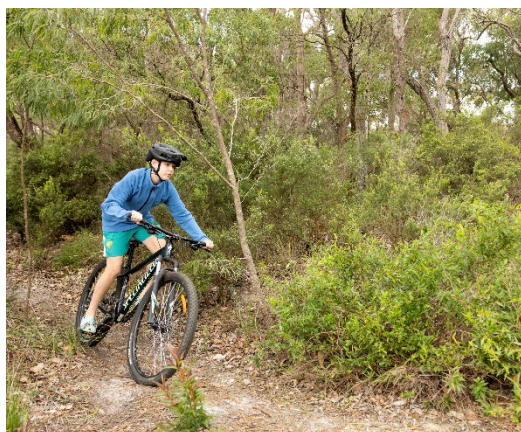
All student rooms have a secure, key-locked door. Students are responsible for their own room key and are encouraged to keep bedroom doors closed when they are away from it.

Room keys are available at reception and must be returned when moving out of the room.

Bicycles, scooters and skateboards

Parents' written permission is required to have a bicycle, scooter or skateboard at the college. These items must be kept in the college sports room, or bike shed, and protective equipment must be when used. Staff will advise when and where they may be used on college grounds.

Please note that eRideables are not permitted on residential college sites.



Inappropriate items

Students are not to bring offensive material into the residential college. Neither are they to display inappropriate material in their room. If in doubt, students can check with college staff who will indicate if it is acceptable. College staff may confiscate items deemed offensive, inappropriate or in poor taste.

Student room searches

To ensure the health and safety of students, college staff may search student rooms if they have sufficient reason to do so. Room searches may occur for many reasons, including when staff believe:

- a student is at risk of self-harm
- dangerous or banned items or illegal substances may be in the college
- a student may be in possession of stolen property.

Confiscated items will generally be given to you or returned to your child to take home, unless it has been delivered into the custody of the Police.

Student mail

We may contact you if your child receives mail/delivery that we believe looks suspicious or may contain contraband. We may ask your child to open the package in front of a staff member, or we may choose to provide the unopened package to you, but we will not open it.

What not to bring

The college does not allow any items which could potentially cause danger to students, staff and/or property. This includes, but is not limited to, candles; matches/lighters; diffusers; weapons; aerosol cans; electric blankets; heaters; fridges; electric ovens; televisions; Pets; gaming consols and Nintendo Switches.

We have a wide range of game consoles and other equipment for students to enjoy, including pool tables, foosball and table tennis, so students are asked to not bring their game consoles to the college.



Leave arrangements

A record of students' whereabouts is maintained through the Reach Boarding school software. When leaving and returning to the college, students must **'sign out'** and **'sign in'** through the Reach system. Leave requests must be entered into and approved through Reach.

Leave while under college care

Different leave arrangements enable students to participate in a range of sporting, cultural and social activities held outside school hours and away from the residential college.

Leaving residential college grounds

Except when leaving to attend school at the usual time, students must receive permission from a supervisor before leaving the residential college grounds. Supervisors may revoke approval to leave the college grounds for disciplinary reasons.

'Town leave'

With your permission, students will be given leave on set days each week. All students can take town leave after school on Wednesday until 5:00pm, and either Saturday morning or Saturday afternoon.

Year 11 students may also take Town Leave after school on Monday, Wednesday and Friday.

Year 12 students can take town leave any day. If a student is unable to take town leave on these set days due to extra-curricular commitments, staff will arrange an alternate time.

Students may use this time to visit the town centre for shopping and banking. All students must be in groups of two or more and follow designated paths when walking into town. Weather permitting, students are encouraged to walk to town. Students are not to visit any private residence whilst on town leave, or to enter any private vehicles. The college bus may be made available in extreme weather conditions.

There is no direct supervision during this leave and students are expected to be an ambassador of the residential college and behave in line with the Code of Conduct.

Casual Employment Leave

After consultation between parents, the student and the college manager, your child may be provided an opportunity to undertake a limited amount of casual employment. While the college may be able to assist with transportation on occasions, this may not always be possible, and parents should ensure alternative transport options are available.

Leave under another's care

Students are provided with seven-day care throughout the school term, however, we do support and encourage students to spend time with family and friends wherever possible.

College staff have a duty of care to protect students from risk of harm. We may refuse a leave request, or refuse to release a student where leave has previously been approved, if we consider the host may pose a risk to your child.

If your child is unable to return on schedule, please contact college staff to let them know when they will be returning.

REACH boarding school system

Albany Residential College uses the Reach boarding school software. For leave and another way of communication.

Parents are required to use Reach for leave requests/approvals. Reach is designed to make the process easy for you to use at any time.

Students have a responsibility to add all their leave requests in a timely manner

If you have any issues or queries about Reach, please contact college staff or the Reach support team at <https://reach.cloud/boarding-schools/>.

Sign out ('host') list

You can add any number of trusted adults ('hosts') into REACH that you can approve your child to go on leave with. It is recommended for ease of use to pre-load Reach with as many 'hosts' as possible to eliminate the need to enter all the details each time a leave request is submitted.

Leave requests

Leave requests are fully automated in REACH. Once a leave request has been submitted, a sequence of permissions is required from parents and college staff for leave to be approved.

A minimum of 24 hours' notice of your child's leave plans are required unless there are exceptional circumstances. This allows us to better plan for and cater to all students at the college.

'Bus Runs'

Bus runs requests need to be submitted at least by lunch time on the day of the bus run so that it can be added to the running sheet. All bus runs are requested on the half hour, Late bus runs will not be added, and student will be refused unless exceptional circumstances.

'Day leave'

Students can go on day leave on the weekend and at various times during the week.

"Overnight leave"

Students are permitted weekend overnight leave to return home or spend the weekend away from the college.

Overnight leave on a school night is discouraged and generally will only be granted for school purposes or to stay with parents or immediate family.

All students on leave with a host are asked to return by 7:30pm Sunday – Thursday and 9:15pm on Friday and Saturday. If your child is unable to return on schedule, please contact college staff to let them know when they will be returning.

Student Transport

Residential college vehicles

Albany Residential College maintains vehicles which supervisors use to transport students. Staff transporting students have appropriate driving licences and passenger transport driver (PTD) authorisations.

The college may provide transport for students in and around town where practicable, however, this service may not always be available.

Private motor vehicles

Your child is not permitted to travel in a private vehicle unless signed out with an approved host through Reach.

Your child will not travel in the personal private vehicle of a residential college staff member unless this is considered to be the best course of action in an exceptional circumstance.



College Life



Bedrooms

Students are provided with their own bedroom and this is primarily a room for sleeping, storing belongings and as personal space should a student wish to spend some time away from others. Students are responsible for keeping their bedrooms clean and tidy and staff may inspect rooms regularly to ensure this is the case.

Bedrooms are not for socialising in. The college provides multiple common areas for students to socialise with bedrooms not to be used for this purpose.

It is a requirement of students that they do not enter another student's bedroom – a rare exception being that a student may invite 1 other student into their bedroom briefly, while keeping their door wide open, when there is a good reason for them to do so. This exception does not apply after lights out when all students are required to be in their own bedrooms.

Dress code

Students are reminded that CCTV is in operation throughout the college and that supervisors of a different gender may occasionally need to access dormitories. Except when using showers or bathrooms, students should be dressed appropriately for shared areas and remain fully and suitably dressed whenever they are outside their bedrooms. This includes breakfast time, when pyjamas—though comfortable—are not permitted.

Meals

Albany Residential College supports healthy eating in line with the Department's Student Health in Public Schools policy and procedures.

The college supports and will cater for any medical or religious dietary requirements. The kitchen staff can also prepare vegetarian and gluten free options where required, please advise us of any special dietary needs. Students can speak with college staff and the chef to suggest additions to the menu.

We aim to ensure all students enjoy three healthy meals every day, attendance at mealtimes is required.

Meal requirements outside of regular mealtimes

Fruit, water, and hot drinks are available at any time.

Students can order a late or early packed meal if they will not be present at a mealtime (e.g. for sports training or medical appointments). In most instances staff should be able to arrange these meals, but students should order these well ahead and notify staff if they need one.

Weekday Mealtimes	
Breakfast	7:00 – 7:30am
<i>Students are encouraged to make school lunches in the mornings.</i>	
Afternoon Tea	3:00 – 3:30pm
Dinner	5:00 – 5:30pm

Weekend Mealtimes	
Breakfast	8:00 – 9:30am
Lunch	1:00 – 1:30pm
Afternoon Tea	3:00 – 3:15pm
Dinner	5:00 – 5:30pm

Personal food and snacks

Food snacks can be purchased or sent from home but for hygiene reasons are best kept in sealed containers. Energy drinks, caffeinated drinks and chewing gum are banned from the college.



Weekday routine

Day	Time	Activity
Monday to Friday AM	6:45 – 7:00am	Wake up and roll call
	7:00 – 7:50am	All students out of bed Continental Breakfast in the Dining Room HOT BREAKFAST ON TUESDAY & THURSDAY MORNINGS
	8:00am	Students washing to laundry Tidy rooms Notify staff if unwell Morning Medications administered
	8:15am	Bus leaves for NASHS / ST JOES / ACC / TAFE
	8:15 – 8:35am	ASHS students leave for school
Monday to Thursday PM	3:10 – 4:00pm	Bus collection from school for NASHS / ST JOES / ACC / TAFE ASHS students return from school Afternoon Tea in the Dining Room
	3:30 – 5:00pm	After school activities (inc. Town Leave on Wednesday)
	6:00 – 6:30pm	Dinner in Dining Room
	6:30 – 7:40pm	After dinner activities
	7:30 – 9:00pm	Tutor available in the dining room
	7:40 – 8:00pm	Supper in Dining Room
	8:00pm	All Year 7-9's hand in phones
	8:00 – 9:00pm	Quiet time for all students during study
	9:00 – 9:30pm	Lights out (Years 7,8 and 9 at 9pm and 11 and 12 at 9:30pm)
	10:00pm	Late study finishes Lights out (all students)
Friday PM	3:10 – 4:00pm	All students return from school Afternoon Tea in the Dining Room
	3:30 – 5:00pm	After school activities
	6:00 – 6:30pm	Dinner in Dining Room
	6:30 – 8:00pm	After dinner activities
	8:00pm	Supper in Dining Room
	9:30pm	All students upstairs and prepare for bed
	10:00pm	Lights out (all students)

Weekend routine

Day	Time	Activity
Saturday Full Routine	8:00 – 9:30am	Breakfast in Dining Room
	9:00am	Dorm Inspections (before town or signing out)
	9:00 – 12:30pm/ 1:30 – 5:00pm	Optional Town Leave
	1:00pm	Lunch in Dining Room
	3:00pm	Afternoon Tea
	6:00 – 6:30pm	Dinner in Dining Room
	6:30 – 9:00pm	After dinner activities
	8:00pm	Supper in Dining Room
	9:30pm	All students upstairs and prepare for bed
	10:00pm	Lights out (all students)
Sunday Full Routine	8:00 – 9:30am	Breakfast in Dining Room
	12:00pm	Dorm Inspections
	1:00pm	Lunch in Dining Room
	1:30 – 5:00pm	Afternoon activities
	3:00pm	Afternoon Tea
	6:00 – 6:30pm	Dinner in Dining Room
	6:30 – 7:40pm	After dinner activities
	7:40pm	Supper in Dining Room
	7:40 – 9:00pm	All students complete study in rooms
	9:00 – 9:30pm	Lights out (Years 7,8 and 9 at 9pm and 11 and 12 at 9:30pm)

****Please note that the front gate is generally closed from 8pm – 7am (8am on weekends). Please contact college staff if you require access during this time.**



Recreation and Social

We aim to provide a range of activities while also allowing for individual needs.

Please note that charges may apply to some activities. We do not seek to profit from these events and your child's participation in any activity requiring payment is at your discretion.

Sport and hobbies

Students are encouraged to participate in a range of individual and team sports and hobbies according to their interests. We do this to promote fitness, fun and social interaction.

Students will need to meet the cost of any membership fees, personal equipment and uniforms.

Check out Albany's online community directory for available social and recreational activities and groups

www.mycommunitydirectory.com.au

Please also note that there are bus runs restrictions. Please check with Staff when planning activities.



Camps and outings

The college may organise camps and outings throughout the year. These activities are voluntary and there is no obligation for your child to participate. You will be asked to provide written permission for your child to attend.



Recreation room and gym facilities

Students are encouraged to make good use of college facilities. Table tennis, foosball and pool equipment can be borrowed from reception. Students can also collect the TV remote from reception. Students are expected to look after the equipment and observe the user requirements on display. Students who wish to make use of the college gym must have parental permission and undertake an induction with staff.



Movies and gaming

College Gaming consoles are permitted at the college with restricted use.

With permission, students may attend the cinema on weekends at their own cost to see approved films. Movies Orana Leave will need to be submitted and parent approved. Students can also select films that they would like to have shown in-house.

The college requires media (television, movies, computer games, DVDs, magazines etc.) accessed by your child whilst boarding at Albany Residential College to be consistent with Australian Government classification ratings for films and computer games.

The college permits content rated G, PG and M. All content remains at the discretion of college staff and will be removed or confiscated if it is deemed inappropriate. Material rated MA15+ does not reflect the values of Albany Residential College and is banned.

Visitors

To ensure the safety of students, all visitors must enter and leave through the reception area and to register in the visitors' book.

We appreciate parent support in helping students settle into their rooms at the start of the year. We remind all parents that other than at these times, access past the reception area is not permitted unless accompanied by a staff member.

Students are welcome to invite their school friends to visit the college. Friends are also required to register in the visitor book and are not permitted in the Dorm areas. Students' friends are required to follow staff instructions whilst on college grounds.

Chores

Students will be required to work as a team to assist around the college with simple duties such as:

- tidying common rooms or other sections of the college
- loading the dishwashers after meals
- simple gardening.

Assisting the cleaning, kitchen and grounds staff replicates what students may be expected to do at home. It encourages cooperation and provides some practical domestic skills for when they leave home.

Laundry

There are four Laundry Rooms with washing machines and clotheslines for students to do their own laundry. Students in Years 10-12 are asked to do their own personal washing (this does not include school uniforms and bedding). There are additional dryers in the senior student laundries, and the main laundry will be accessible over the weekend as required. Irons and ironing boards are also available.

The college laundry service is open for all students to put out school uniforms and bedding, and students in Years 7-9 may put out their personal washing.

Students are asked to bring washing baskets to the laundry on the following days:

Boys: Monday and Thursday

Girls: Tuesday and Friday

Clean washing can be collected from the laundry after school. Parents are asked to provide a washing basket and wash bag (for socks and underwear) and to have the students name clearly labelled on all items.

Religious freedom

Under the *School Education Act 1999* the curriculum and teaching in government schools is not to promote any particular religious practice, denomination, or sect. We also adhere to this principle at Albany Residential College.

The college supports students who wish to practise their beliefs. Staff will assist where possible for your child to attend any religious services and cultural events they choose.

Health and safety

Student health

Our staff care for your child's health and wellbeing and all supervisors have a First Aid Certificate. When we offer a place at the college, you are required to complete a [Student Health Care Summary Form](#) ensuring staff have the information required to support the management of your child's health care needs.



Medical appointments

We work with all our families to help maintain the health of students. Please advise us if your child requires a medical appointment and we may be able to assist you. Please advise the college on the [Student Health Care Summary Form](#) if you have any preferred local medical practice.

Practice	Address	Phone
Pioneer Health	2 Pioneer Road	9842 2822
Southern Regional Medical Group	32 Albany Highway	9845 9000
Sanford Dental	82 Stead Road	9842 6233
Aberdeen Dental Centre	1/60 Aberdeen Street	9842 2345
Great Southern Physio	65 Albany Highway	9842 8850
Bodycare Physio	64 Lion Street	9842 2759
Amcal+ Pharmacy	262/264 York Street	9842 2036
Pharmacy 777	18 Pioneer Road	9841 1532

All medical expenses, remain the responsibility of parents. You may choose to take out insurance, including ambulance cover, for your child's health needs.

Cancellation of ambulance call-out by parents

We have a duty of care for our students. If we call an ambulance for a student at risk, but parents request its cancellation, we will not do so until parents arrive and the student is handed into their care.

Medication

If your child requires medication as a short or long-term measure, it is essential you inform the staff and update the [Student Health Care Summary Form](#).

The administration of medication carries inherent risk, to help make this practice as safe as possible we require all medications be provided to the college in a webster pack. Your chemist will be able to do this for you.

'All medications' includes those that are prescribed, purchased 'over the counter' and those that may be considered supplements. Some examples include Panadol, Ritalin or other medications used to treat ADD/ADHD, anti-anxiety medications, melatonin, antibiotics, birth control, herbal remedies, iron tablets, vitamins and hay fever/allergy relief.

Students are not permitted to keep any medications in their bedrooms, and/or self-administer any medications except an asthma inhaler.

Please contact the college if you have any questions about medications.

All medications are to be locked in a cupboard in reception.

Mental Health

Our supervisors keep a close watch on the mental health of students. We also have support from a school psychologist who works with students and staff to improve student wellbeing. Students can make an appointment with the school psychologist through the supervisory team. Parents are also able to request this service for their children. Students and parents may also be able to avail themselves of mental health supports through their school and/or other community services.

It is essential you keep the college informed of any developments in your child's home or personal life so that we can best provide and care for your child. This includes information about your child's wellbeing, which may include such concerns as bullying, friendship issues, suicidal behaviour, suicidal ideation and non-suicidal self-injury (NSSI).

Collaborating and sharing information with the residential college and fostering open communication between parents, the school and the college is essential in supporting the safety and wellbeing of all students.

Homesickness and 'child-sickness'

It is possible that students may become homesick when living away from home. Staff have a great deal of experience in assisting students and parents when students show signs of missing home.

Homesickness can affect each student in different ways so there are several methods used by staff to support and care for students. Staff work with you to help your child with coping skills and to build resilience in living in a boarding community.

Similarly, parents may become 'child sick' when they don't get to see their child every day. These are all very normal feelings for the whole family.



Emergencies and accidents

The college maintains an Incident Management Plan to guide aspects of prevention, preparedness, response, and recovery. We regularly practise evacuation and lockdown drills.

Fire Safety

Albany Residential College is listed on the Department of Fire and Emergency Services Bushfire Zone Register. Accordingly, we have a separate and stand-alone bushfire plan and practise further evacuation drills during bushfire season.

The college has fire alarms, smoke detectors, fire extinguishers, and emergency evacuation plans. Students are trained in emergency evacuation procedures and practise evacuation drills regularly.

The Department of Fire and Emergency Services may charge a fee to attend premises in response to an alarm where there is no fire. Where it can be established a student has deliberately caused a false fire alarm, they may be asked to contribute to the costs of the callout.

Parent concerns and complaints

Residential college concerns and complaints

Albany Residential College is committed to providing a high-quality boarding service. We are always considering how to improve, and we value your feedback.

If you have any concerns about our service or facilities, please let us know. You can also talk about it with any member of staff. Should they be unable to assist you, then please request an appointment with the college manager to discuss your concern or complaint.

Queries, concerns, and complaints are best managed at the college, in line with the Department of Education's Disputes and Complaints policy. If a satisfactory resolution has not been found after providing the College Manager with sufficient time and opportunity to address the matter, you may choose to make contact with the *Albany Local Education Office* or the Manager Residential Colleges on 9264 4425 or residentialcolleges@education.wa.edu.au.

Child protection concerns

Albany Residential College is committed to the care, safety, and protection of all students. We provide protective behaviours awareness training to our students and our supervisors have undertaken training in child protection and are **mandatory reporters** of suspected child abuse.

Reporting a child protection incident or concern

There are a number of avenues for communicating incidents or concerns.

- Inform the College Manager and/or the Manager Residential Colleges.
- Contact the Department of Education's Standards and Integrity Directorate on 9264 4740 or email complaints@education.wa.edu.au.
- Contact the Parent Liaison Office at email: parentliaison@education.wa.edu.au.



Safety and welfare – for students



The following sections are for students.

At Albany Residential College our supervisors are always on hand. You can talk with us about anything. We will listen and give you advice and support. If we think a matter needs to be discussed with others, we might refer you to someone more qualified to provide specialised support. This might be the College Manager or school psychologist.

Your safety and the safety of others

Firstly, you have the RIGHT to be safe and to feel safe at all times. If you have concerns or a complaint about what might be happening at the college, there are people who are able to help you.

Safety concerns may include things like:

- inappropriate social approaches by a person to make friends with you or start a close relationship with you
- inappropriate touching by a person which makes you feel uncomfortable
- sexual talk, personal emails or personal contact via mobile phones or social media
- inappropriate physical handling (hitting, pushing, hugging).

You might also be concerned about similar behaviour/s towards someone else at the college. It's OK for you to make a complaint on behalf of another student and we encourage you to do so.

Residential college student complaints

T: 1800 011 114 (Monday to Friday 8am to 5pm)

E: residentialstudentcomplaints@education.wa.edu.au

W: www.education.wa.edu.au/residential-college-student-complaints

When you call you will speak to someone trained in protective behaviours. They care and understand that you may feel a range of emotions about contacting them including anxiety, shame, or relief. You can talk with them about yourself or someone else you are concerned about. You can remain anonymous but if you would like someone to get back to you, you will need to provide some contact details.

If your complaint is urgent or is an emergency please call the Police, Crisis Care or Kids Helpline.

Your health and wellbeing concerns

It's OK to have concerns about what might happen at school or where you are living during the school year. We understand there might be times when you want help so please use the helplines listed here.

School concerns

If you have concerns about school such as homework, school activities or other students you can talk with your parents or carers or with school staff such as:

- your teachers
- school psychologist
- school nurse
- school chaplain
- any other staff member.

Support options

Police

24 hours a day, seven days a week

T: 131 444 (000 for emergencies)

W: www.police.wa.gov.au

When you call you will be asked to:

Press '1' for immediate police attendance

Press '2' for general information, or to report an incident that does not need immediate police attendance

Remember, if it's an emergency, immediately hang up and call 000.

Crisis Care

24 hours a day, seven days a week

T: 9223 1111

T: 1800 199 008 (country free call)

T: 9325 1232 (TTY)

W: www.dcp.wa.gov.au/crisisandemergency

Crisis Care is a free crisis information and counselling service by the Department of Communities for people needing urgent help.

Crisis Care can help when:

- you need immediate help with a serious problem
- you are concerned about your wellbeing or that of another person
- you are alone or afraid and urgently need to talk with someone
- you need counselling, information, or other support.

Kids Helpline

24 hours a day, seven days a week

T: 1800 55 1800

W: www.kidshelpline.com.au

Kids Helpline is Australia's only free, private, and confidential telephone and online counselling service specifically for young people aged between five and 25.

- If you need to talk with someone immediately, the fastest way is to call and speak with a counsellor.
- If you're not sure about talking with someone on the phone, or you can't get to a phone, use the web, or email service.
- Calls from mobile phones, landlines and payphones are free if you are calling from within Australia.

You can talk with Kids Helpline about anything including:

- relationships with your family, boyfriend, or girlfriend
- a friend who needs help
- school or study worries
- how you are feeling, such as angry, sad, or confused.

Other support options you may like to consider:

- eHeadspace 1800 650 890 or www.eheadspace.org.au
- Rurallink 1800 552 002
- 13 YARN 13 92 76 or <https://www.13yarn.org.au/about-us>
- Your local or family General Practitioner or mental health provider

Bullying

We are committed to providing all students with a safe and caring environment – should you have any concerns about feeling unsafe or threatened, we encourage you to speak to a staff member about your concerns.

Suggestions

If there is anything we can do better, please let us know. You can raise your suggestions with your student council or any member of staff at any time.



Appendix: Residential college code of conduct

1. AUTHORITY

The Code of Conduct (the Code) is issued and published pursuant to section 213J of the *School Education Act 1999*.

2. PURPOSE

The Boarding Agreement provides that the student must obey the Code.

The purpose of the Code is to set out the required standard of conduct to be observed by a student while boarding at a residential college.

Students who breach the Code may be subject to disciplinary action. The college manager can suspend or terminate a boarding agreement for substantial breaches of the Code.

3. SCOPE

This Code applies to all students who board at a residential college.

4. CONDUCT IN RESPECT TO SELF

Students will:

- act with proper regard for their safety, education, welfare and health (mental and physical);
- conduct themselves in a respectful, responsible and lawful manner;
- behave in a way that upholds the values, integrity and reputation of the residential college; and
- accept responsibility for their actions.

5. CONDUCT IN RESPECT TO OTHER STUDENTS

Students will:

- treat other students with respect, dignity, courtesy, honesty and fairness and with proper regard for others' rights, safety and welfare;
- live in harmony with other students and respect others' views and opinions;
- respect the privacy of others; and
- report a breach of the Code to appropriate staff.

6. CONDUCT IN RESPECT TO STAFF

Students will:

- treat staff with respect, dignity, courtesy, honesty and fairness and with proper regard for their rights, safety and welfare;
- respect their property, views and opinions; and
- comply with any reasonable request of a staff member.

7. CONDUCT IN RESPECT TO PROPERTY

Students will:

- treat residential college property and facilities with respect; and
- treat staff and fellow students' property with respect.